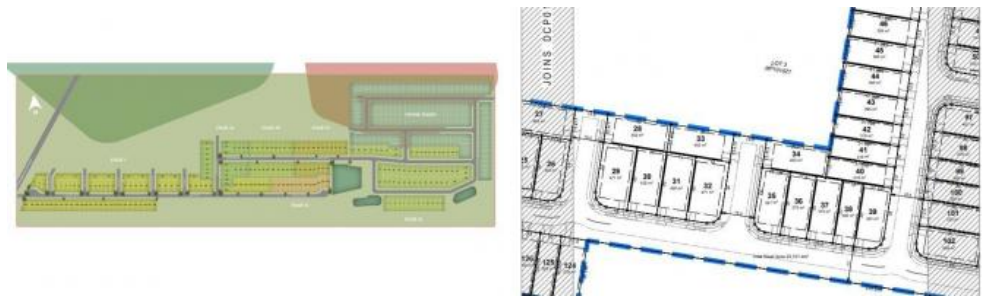




33 Bligh Street, Logan Reserve



MIDDLETON PARK- REGISTERED LAND! SOLD

LOTS FOR SALE IN MIDDLETON PARK!

LOT 33- 402m2 13.4m wide 30m long

When planning to build your new home your location is so important. Middleton Park has all the established amenities you could need while offering the potential for so much more.

Middleton Park sits within the broader vision of a 25 year redevelopment plan to create a vibrant and well connected urban community.

Everything at Middleton Park is designed to support a better lifestyle in the growing Logan Reserve community, becoming a dynamic addition to South East Queensland and the Brisbane lifestyle.

With extensive work and education facilities within minutes, easy access to various transport routes and public transport – opportunities to shop, work, study and play either close to home, or further afield are limitless.

The above information provided has been furnished to us by the vendor/s. We have not verified whether or not that information is accurate and do not have any belief in one way or the other in its accuracy. We do not accept any responsibility to any person for its accuracy and do no more than pass it on. All interested parties should make and rely upon their own inquiries in order to determine whether or not this information is in fact accurate.

402 m2

Price	SOLD
Property Type	Residential
Property ID	60
Land Area	402 m2

AGENT DETAILS

Aiyub Khan - 0406 427 990

OFFICE DETAILS

Future Properties Group Pty Ltd
287 Algester Rd Algester, QLD, 4115
Australia
0406 427 990

